

Space

The Flowing Laminated White Space 白色層紋

文字：Join 空間設計：八寬設計



Design: Sheng-Hao, Sun

Category: House

Material: Marble / Black iron paint / Oak leather / Leather

Area: 132 m²

Project Year: May, 2016

設計：孫晟濤

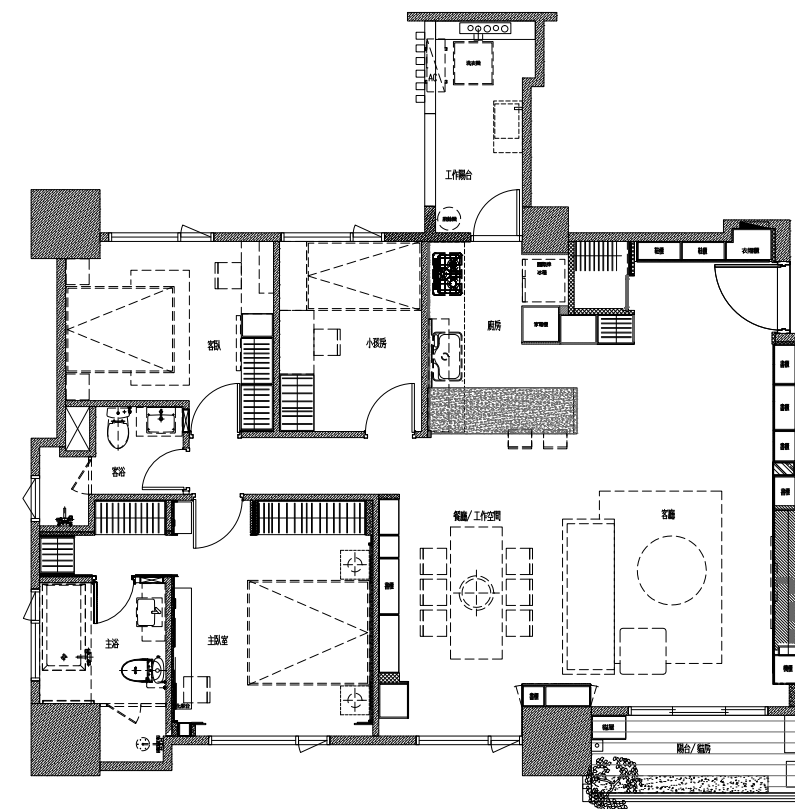
形式：住宅

材料：大理石 / 黑鐵烤漆 / 橡木木皮 / 皮革

面積：40 坪

時間：2016.05





線性架構之下，長形幾何的分佈，在虛實之間層遞。

空間設計的想法有時往往必須身歷其境才會有所思緒，從場域的型態、周圍的環境甚至於和屋主的閒聊，當下便有了想像，從點的發想到線的連接，再到面的呈現，一步步建構出屬於居住者的空間需求，精工的細節要求，也唯有如此方能有完美的呈現。

此案為一新成屋，格局為原先建築隔間，廚房區域原本的隔間讓空間較為侷限，因此，設計者在規劃時便將此處隔間移除，釋放出空間和客廳場域相連接，使公領域空間寬敞而開闊。玄關區木質素材搭配灰色地磚和白色格柵天花，純粹的素材及色調讓此處有著沉靜感受，接續著深色木質遞延至電視牆，淺白色花紋石材營造客廳不同的視感，開放廚房所拉出的中島相對應到長形天花，大小不一的花崗石薄片燈盒成為空間視覺焦點，也是點、線、面。「點」的起始，客廳和多功能場域天花在矩型線條的分佈下，形成延續的「線」，轉折至黑色格狀書櫃，盒燈、書櫃、天花矩型，三者之間相互呼應為「面」的呈現，在虛實之間讓看似簡單的空間卻有相連續的語彙貫穿其中。公領域淺灰色花紋石材的運用，不但增添了場域的表情，也弱化了樑柱；玄關的木質圓凳、客廳的黑色圓桌、餐廳的造型圓燈，三者亦相互映襯，在線條和矩型的規矩空間中，扮演著不可或缺的活潑角色。

走道往內則是私領域空間，在白色為基底的場域裡，淺色木質衣櫃和床頭壁面繡布在黑色框線中，和黑色窗框相對，特意做的二側立柱，讓窗簾內外有個延伸的暫留，感受多一些的空間延伸；點、線、面和純粹材質的設計構思，創造出簡單而不簡單的幾何語彙空間。



Sometimes, the idea of design will pop up in your mind when you are at the situation, no matter from the field type, surroundings, or even chatting with the dweller. When you have ideas in that moment, you can construct a space that fulfill dwellers need, and then present every single detail perfectly.

This is a new construct house, the space of kitchen is limited because of the original partition. Therefore, designer decided to remove the partition when planning, this will release some space and connected to the living room, the public area will then wider. The wood element on the entrance in group with gray floor tiles and white grill ceiling, those materials and colors exude calm feeling. Dark wood extend to the television wall, light white pattern stone create different vision to the living room. The open-kitchen echoes with the rectangular ceiling, lamp made by different sizes of granite become the focus point on this area, which is also the starting point. Living room and multi-function area are separate by liners on the ceiling. Black grid book cabinet, lamp and rectangular ceiling echo, and appear as a beautiful scene. Gray pattern stone input different expression into the public area, and also weaken the existing beam. Wooden round stool on the entrance, black round table on the dining room echo with the modeling round lamp in the dining room, they are the indispensable lively role in the space.

Private area is after the corridor. In this white space, designer input light wooden wardrobe and the wall behind the bed are stretched into a black frame, which is echo with the black window frame. Pillar on both sides let the space visually extend. Pure elements in this design, creating a simple geometry space.

木材質的應用，營造了空間的氛圍。